



# Vibhuti Enterprises

*Build a culture of innovation...*

---

PLOT NO-5A ,GALI NO-11, KADIPUR INDUSTRIAL AREA,NEAR RADHA SWAMI SATSANG  
ASHRAM,GURGAON-122001

Phone no. 9891971134,9811236885,9807359839,8901177556

Email Id : [vibhutienterprise2017@gmail.com](mailto:vibhutienterprise2017@gmail.com)

Website: [vibhutienterprise.co.in](http://vibhutienterprise.co.in)

## **From Managing Director's desk .. Manish Sharma**



**I take this opportunity to thank our valued customers, whose continued patronage and confidence in our products inspires us to extend the best of services and enables us to provide value for their money.**

**Being dedicated to taking Electronics, Energy and Information Technology to rural areas, we are focused at addressing the needs of our customers through rugged, efficient, reliable and economic milk analysis and automation solutions and products, in line with the world's best, while maintaining continuous interaction with them to assess their emerging requirement, so as to be ready when the needs arise. We are committed to total customer satisfaction by identifying their specific needs, translating them into Quality products and providing dependable after-sales-services. This commitment is the corner stone of our Quality Policy. The organization is also committed to its shareholders by way of maximizing the wealth through sustained growth under the overall ambit of the spirit of a Public Sector Unit, to optimally balance the commercial objectives and the goals of social service to the nation at large.**

**I therefore, seek continued patronage of our valued customers, cooperation of our employees and thank our well-wishers who have contributed to the growth of the organization.**

# SCOPE OF WORK

- ➔ Enclosures manufacturing by CNC machines
- ➔ Fiber Laser cutting works
- ➔ Jig and Fixture Design and Manufacturing
- ➔ Poka-yoke based fixtures
- ➔ Trunkey Project of Plant Electrification
- ➔ Trunkey Project of Plant Fabrication – MS / SS
- ➔ On site Electrical/ Mechanical / Civil support.
- ➔ Control and Power panels designing & Mfg.
- ➔ Conveying systems – Trolleys and Conveyors

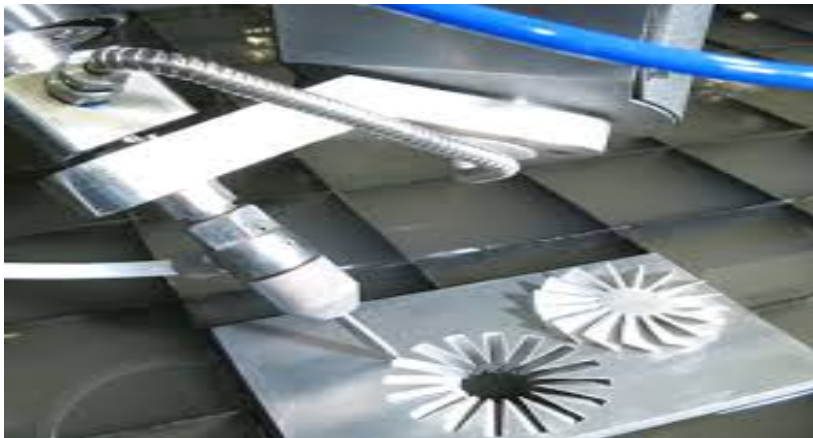
# Plant capacity

- ➔ **Owned plant having 8000 Sq Feet area**
- ➔ **Power back up for complete plant**
- ➔ **Experienced and dedicated team**
- ➔ **Well equipped Tool Room**
- ➔ **CNC shearing and Bending machine**
- ➔ **Fibre Laser cutting machine**
- ➔ **Welding M/c ARC, MIG, ARGON, Gas Welding**

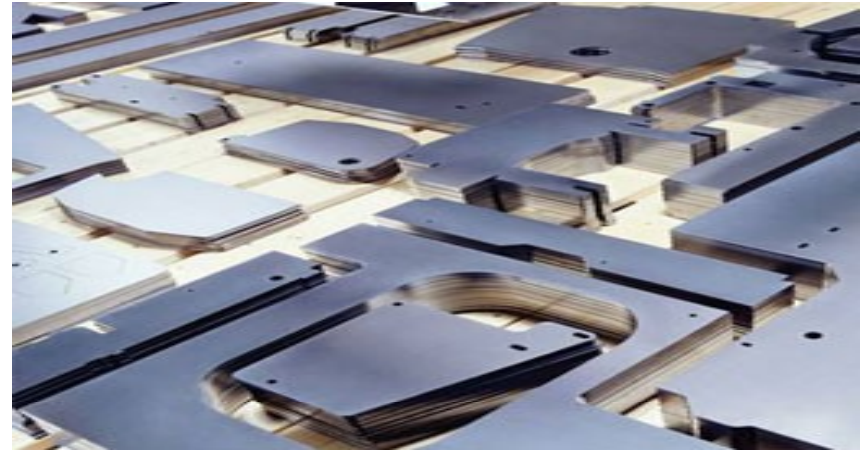
# Enclosures manufacturing by CNC machines



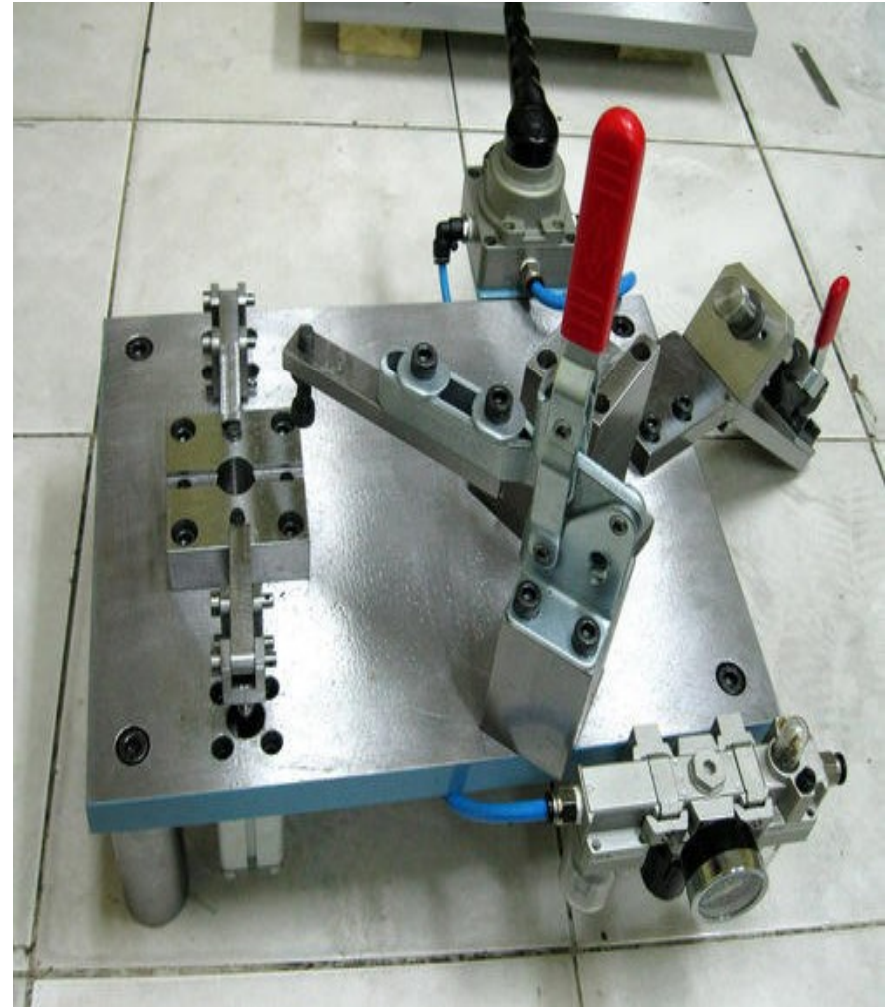
# Fiber Laser cutting works



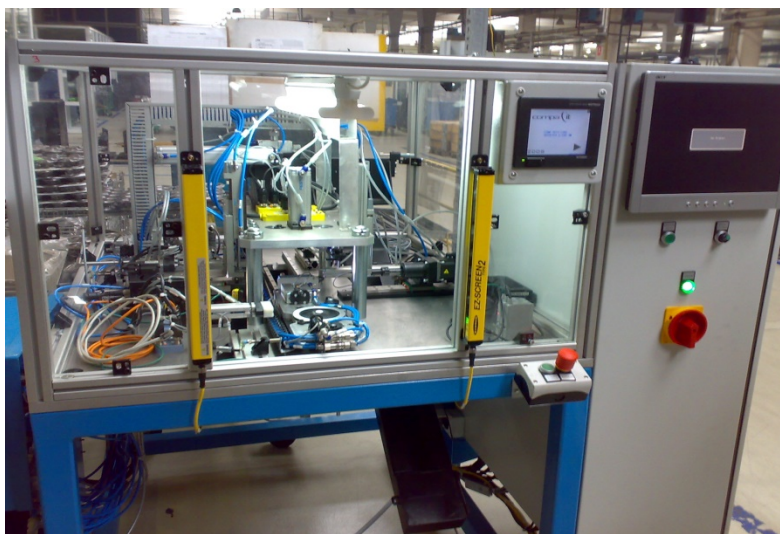
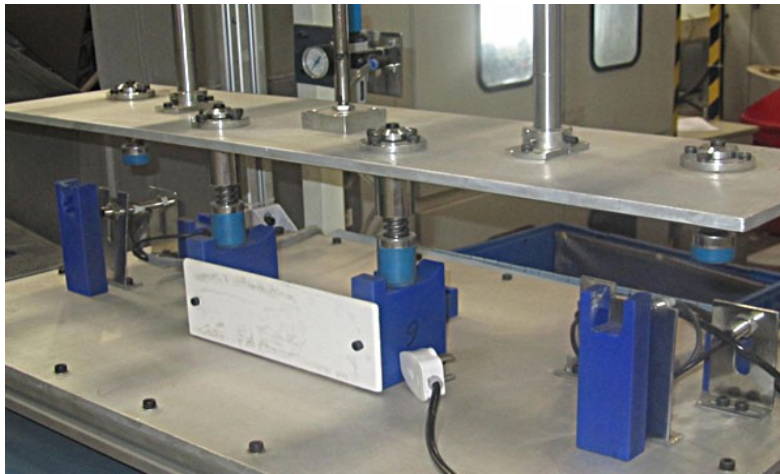
# Gallery CNC Laser Cutting



# Jig and Fixture



# Poka-yoke based fixture



# Trunkey Project of Plant Electrification



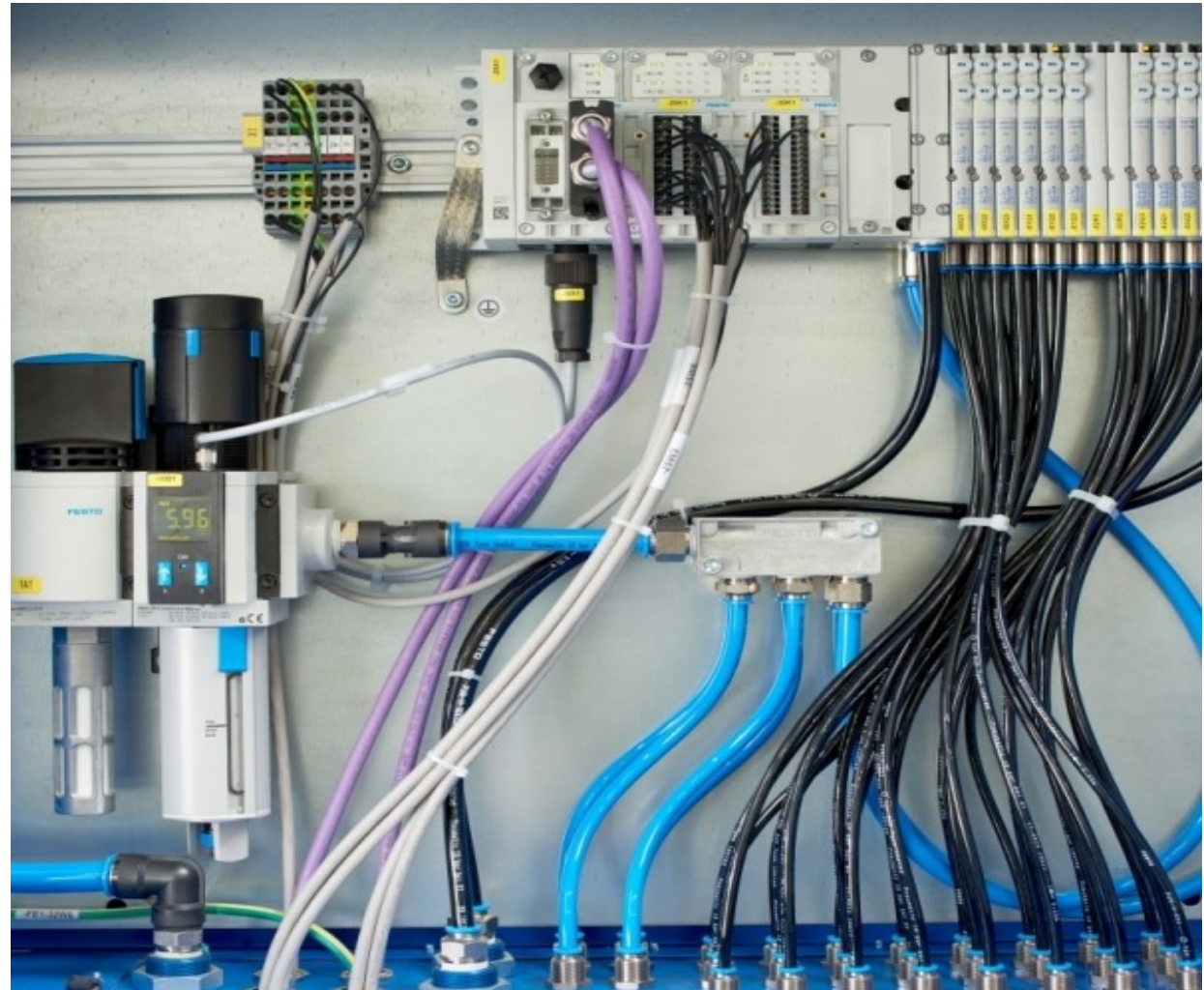
# Trunkey Project of Plant Fabrication – MS / SS



# Paint shop Fabrication/Commissioning



# On site Poka Yoke, Automation and Electrical cabling support.



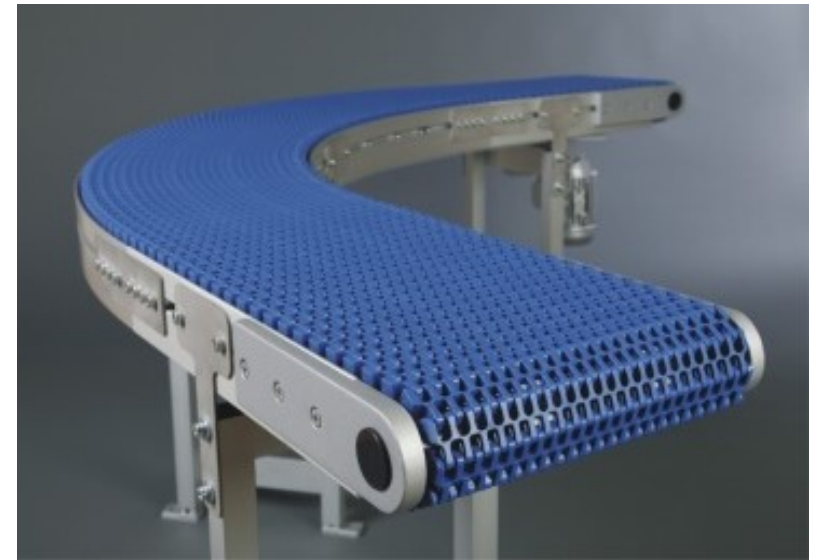
# Welding Works



# Control and Power Panels designing & Mfg.



# Conveying systems – Trolleys and Conveyors



***Thanking you***

***awaiting your valuable enquiry...***